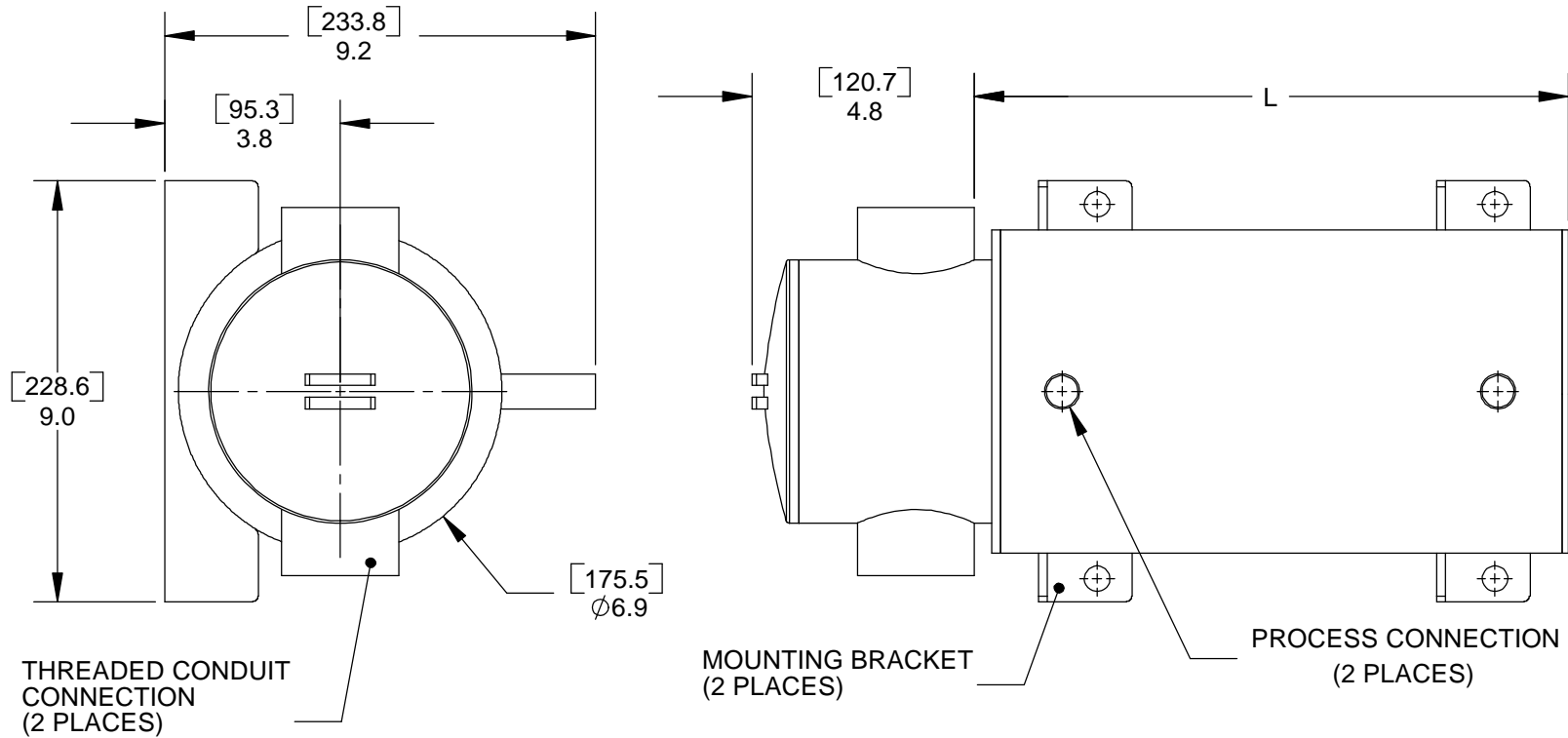


DRAWING NO. 55-0001-0



NOTES:

1. WETTED SURFACES: 316SS
2. PROCESS CONNECTIONS: 3/4" (19mm) TUBE STUBS

kW	L
2	10.0 [254.0]
3	12.5 [317.5]
4	15.0 [381.0]
6	20.0 [508.0]
9	28.0 [711.2]

APPROVED BY:			PRODUCTION REVIEW:			Q.C. REVIEW:			<p><b>PROCESS TECHNOLOGY®</b></p> <p>7010 LINDSAY DR, MENTOR OH USA (P) 440-946-9500 (F) 440-974-9561 WWW.PROCESS-TECHNOLOGY.COM</p>		
						PCN:			<p>[mm] INCHES</p> <p>INTERPRET GEOMETRIC DIMENSIONING AND TOLERANCING PER ASME Y14.5M</p>		
						MATERIAL:					
									<p>3rd ANGLE PROJECTION</p>		
REV.	BY	DATE	DESCRIPTION OF CHANGE						<p>DESCRIPTION:</p> <p><b>SH HEATER - SALES DRAWING</b></p>		
THIS DRAWING IS THE PROPERTY OF PROCESS TECHNOLOGY. IT CONTAINS CONFIDENTIAL INFORMATION AND MAY NOT BE REPRODUCED IN ANY WAY WITHOUT THE PERMISSION OF PROCESS TECHNOLOGY.									<p>SIZE: A    SCALE: NTS    PAGE: 1 OF 1    DRAWING No. <b>55-0001-0</b></p>		